



VAM[®] TOP

TOP of the class



VAM TOP

VAM TOP HC

VAM TOP HT

VAM TOP FE

VAM HW ST

VAM SLIJ II

VAM FJL

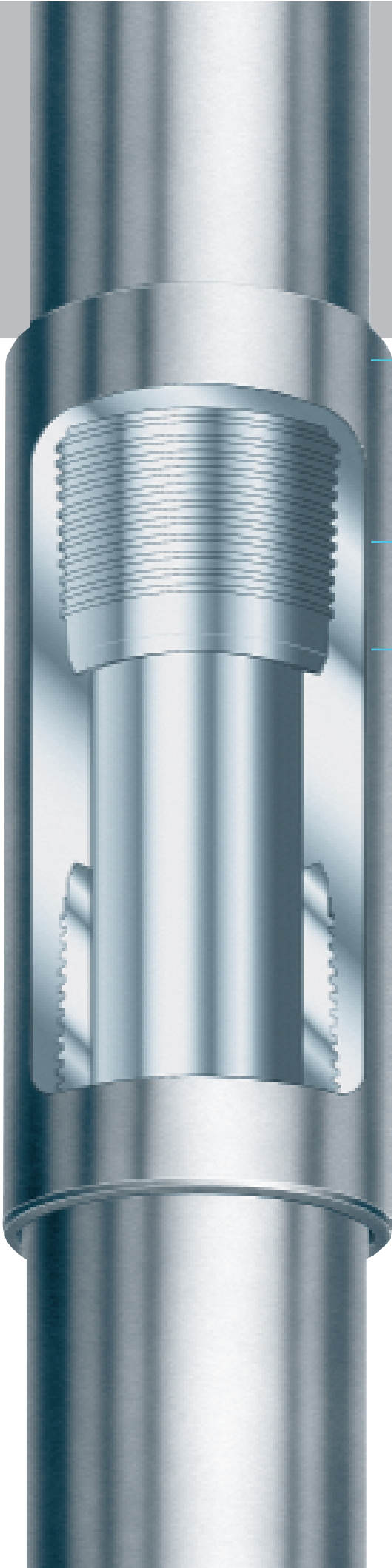
VAM MUST

DINO VAM

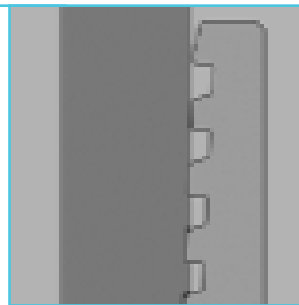
BIG OMEGA



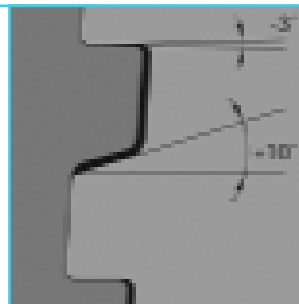
VALLOUREC & MANNESMANN TUBES
OCTG DIVISION



Thread run-out

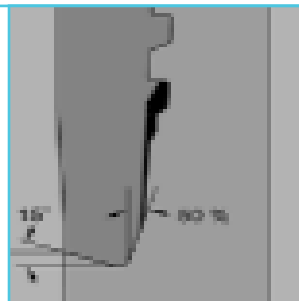


Thread form



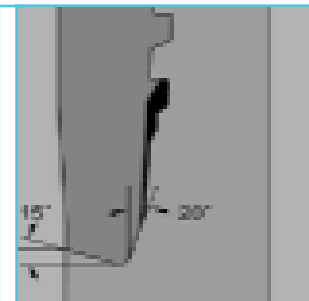
- Ø 2 3/8" + 2 7/8" – 8 TPI
- Ø 3 1/2" to 4 1/2" – 6 TPI
- Ø 5" to 7 3/4" – 5 TPI
- Ø 8 5/8" and above – 4 TPI
- Taper 1:16

Tubing seal geometry



DIA ≤ 4 1/2"

Casing seal geometry



DIA ≥ 5"

Joint yield strengths are calculated from the minimum specified material yield stress and the critical joint cross sectional area, pipe or coupling, as appropriate.

Size (OD)	Nominal weight	Wall thickness		Drift diameter	Coupling (OD) reg.	Make-up loss	Coupling length	Pipe body section	Coupling CCS*	VAM TOP regular yield strength (1000 lb.)								
		inch	mm							inch	mm	55 ksi	80 ksi	85 ksi	90 ksi	95 ksi	100 ksi	110 ksi
inch	lb./ft.	inch	mm	inch	inch	inch	inch	sq. in.	sq. in.	ksi	ksi	ksi	ksi	ksi	ksi	ksi	ksi	ksi
2 3/8 60.33	4.60	0.190	4.83	1.901	2.677	2.444	5.906	1.304	1.330		104	111	117	124	130	143	163	183
	5.10	0.218	5.54	1.845	2.719	2.444	5.906	1.477	1.507		118	126	133	140	148	162	185	207
	5.80	0.254	6.45	1.773	2.746	2.891	6.772	1.692	1.727		135	144	152	161	169	186	212	237
	6.30	0.280	7.11	1.721	2.781	2.891	6.772	1.843	1.879		147	157	166	175	184	203	230	258
	6.60	0.295	7.49	1.691	2.801	2.891	6.772	1.928	1.967		154	164	174	183	193	212	241	270
2 7/8 73.03	7.35	0.336	8.53	1.609	2.852	2.891	6.772	2.152	2.195		172	183	194	204	215	237	269	301
	6.40	0.217	5.51	2.347	3.222	2.519	6.024	1.812	1.848		145	154	163	172	181	199	227	254
	7.80	0.276	7.01	2.229	3.275	3.180	7.362	2.254	2.299		180	192	203	214	225	248	282	316
	8.60	0.308	7.82	2.165	3.320	3.180	7.362	2.484	2.534		199	211	224	236	248	273	311	348
	9.35	0.340	8.64	2.101	3.364	3.180	7.362	2.708	2.762		217	230	244	257	271	298	339	379
	9.80	0.362	9.19	2.057	3.393	3.180	7.362	2.858	2.914		229	243	257	272	286	314	357	400
3 1/2 88.90	10.50	0.392	9.96	1.997	3.431	3.180	7.362	3.058	3.119		245	260	275	291	306	336	382	428
	10.70	0.405	10.29	1.971	3.447	3.180	7.362	3.143	3.207		251	267	283	299	314	346	393	440
	11.50	0.440	11.18	1.901	3.470	3.558	8.110	3.366	3.433		269	286	303	320	337	370	421	471
	6.50	0.170	4.32	3.035	3.770	3.032	7.047	1.778	1.814		142	151	160	169	178	196	222	249
	7.70	0.216	5.49	2.943	3.846	3.032	7.047	2.228	2.271		178	189	201	212	223	245	279	312
	9.20	0.254	6.45	2.867	3.907	3.032	7.047	2.590	2.643		207	220	233	246	259	285	324	363
	10.20	0.289	7.34	2.797	3.961	3.032	7.047	2.915	2.973		233	248	262	277	292	321	364	408
	12.70	0.375	9.53	2.625	4.043	3.820	8.622	3.682	3.756		295	313	331	350	368	405	460	515
	13.70	0.413	10.49	2.549	4.095	3.820	8.622	4.005	4.086		320	340	360	380	401	441	501	561
	14.30	0.430	10.92	2.515	4.117	3.820	8.622	4.147	4.230		332	352	373	394	415	456	518	581
4 101.60	14.70	0.449	11.40	2.477	4.142	3.820	8.622	4.304	4.391		344	366	387	409	430	473	538	603
	15.50	0.476	12.09	2.423	4.154	4.261	9.528	4.522	4.611		362	384	407	430	452	497	565	633
	16.70	0.510	12.95	2.355	4.196	4.261	9.528	4.791	4.889		383	407	431	455	479	527	599	671
	8.20	0.190	4.83	3.495	4.300	3.159	7.323	2.274	2.319		182	193	205	216	227	250	284	318
	9.50	0.226	5.74	3.423	4.361	3.159	7.323	2.680	2.733		214	228	241	255	268	295	335	375
	10.90	0.262	6.65	3.351	4.420	3.159	7.323	3.077	3.137		246	262	277	292	308	338	385	431
	12.10	0.299	7.59	3.277	4.478	3.159	7.323	3.476	3.545		278	295	313	330	348	382	435	487
	13.20	0.330	8.38	3.215	4.526	3.159	7.323	3.805	3.881		304	323	342	361	381	419	476	533
	14.80	0.380	9.65	3.115	4.552	4.041	9.094	4.322	4.408		346	367	389	411	432	475	540	605
	16.10	0.415	10.54	3.045	4.602	4.041	9.094	4.674	4.765		374	397	421	444	467	514	584	654
4 1/2** 114.30	16.50	0.430	10.92	3.015	4.623	4.041	9.094	4.823	4.920		386	410	434	458	482	531	603	675
	18.90	0.500	12.70	2.875	4.691	4.545	10.079	5.498	5.609		440	467	495	522	550	605	687	770
	22.20	0.610	15.49	2.655	4.827	4.545	10.079	6.496	6.625		520	552	585	617	650	715	812	909
	10.50	0.224	5.69	3.927	4.858	3.222	7.441	3.009	3.069		241	256	271	286	301	331	376	421
	11.60	0.250	6.35	3.875	4.902	3.222	7.441	3.338	3.407		267	284	300	317	334	367	417	467
	12.60	0.271	6.88	3.833	4.937	3.222	7.441	3.600	3.672		288	306	324	342	360	396	450	504
	13.50	0.290	7.37	3.795	4.968	3.222	7.441	3.836	3.914		307	326	345	364	384	422	480	537
	15.10	0.337	8.56	3.701	5.042	3.222	7.441	4.407	4.495		353	375	397	419	441	485	551	617
	17.00	0.380	9.65	3.615	5.063	4.041	9.094	4.918	5.016		393	418	443	467	492	541	615	689
	17.70	0.402	10.21	3.571	5.096	4.041	9.094	5.175	5.279		414	440	466	492	518	569	647	725
5 127.00	18.90	0.430	10.92	3.515	5.137	4.041	9.094	5.498	5.608		440	467	495	522	550	605	687	770
	21.50	0.500	12.70	3.375	5.209	4.545	10.079	6.283	6.411		503	534	565	597	628	691	785	880
	23.70	0.560	14.22	3.255	5.289	4.545	10.079	6.932	7.070		555	589	624	659	693	763	867	970
	13.00	0.253	6.43	4.369	5.400	4.191	10.394	3.773	3.856		208	222	232	242	252	281	327	372
	15.00	0.296	7.52	4.283	5.470	4.191	10.394	4.374	4.462		241	256	272	288	304	341	401	457
	18.00	0.362	9.19	4.151	5.577	4.191	10.394	5.275	5.385		290	307	324	342	360	408	481	557
	20.30	0.408	10.36	4.059	5.648	4.191	10.394	5.886	6.009		324	341	360	379	399	458	547	636
	20.80	0.422	10.72	4.031	5.669	4.191	10.394	6.069	6.202		334	352	371	391	411	471	562	654
5 1/2 139.70	21.40	0.437	11.10	4.001	5.691	4.191	10.394	6.264	6.395		345	364	384	404	424	485	587	681
	23.20	0.478	12.14	3.919	5.750	4.191	10.394	6.791	6.925		374	394	415	436	457	519	632	747
	24.10	0.500	12.70	3.875	5.781	4.191	10.394	7.069	7.211		389	409	430	451	472	535	650	767
	14.00	0.244	6.20	4.887	5.876	4.382	10.748	4.029	4.115		222	232	242	252	262	291	348	405
	15.50	0.275	6.99	4.825	5.929	4.382	10.748	4.514	4.608		248	259	270	280	291	320	388	456
	17.00	0.304	7.72	4.767	5.978	4.382	10.748	4.962	5.069		273	284	295	306	317	346	415	494
	20.00	0.361	9.17	4.653	6.071	4.382	10.748	5.828	5.944		321	332	343	354	365	394	473	563
	23.00	0.415	10.54	4.545	6.156	4.382	10.748	6.630	6.756		365	376	387	398	409	438	517	617
	26.00	0.476	12.09	4.423	6.248	4.382	10.748	7.513	7.659		413	424	435	446	457	486	585	695
	26.80	0.500	12.70	4.375	6.283	4.382	10.748	7.854	8.007		432	443	454	465	476	505	604	714
6 5/8 168.28	28.40	0.530	13.46	4.315	6.327	4.382	10.748	8.275	8.437		455	466	477	488	499	528	627	737
	29.70	0.562	14.27	4.251	6.372	4.382	10.748	8.718	8.888		479	490	501	512	523	552	651	761
	20.00	0.288	7.32	5.924	7.081	4.427	10.866	5.734	5.845		315	326	337	348	359	388	467	557
	23.20	0.330	8.38	5.840	7.154	4.427	10.866	6.526	6.659		359	370	381	392	403	432	511	601
	24.00	0.352	8.94	5.796	7.191	4.427	10.866	6.937	7.080		382	393	404	415	426	455		

External pressure equal to collapse pressure calculated from API Bul. 5 C 3 section 1. Minimum internal yield pressure are calculated from API Bul. 5 C 3 section 3, formula 3.1.1.

External pressure (psi)									Minimum internal yield pressure (psi)									Nominal weight	Size (OD)
55 ksi	80 ksi	85 ksi	90 ksi	95 ksi	100 ksi	110 ksi	125 ksi	140 ksi	55 ksi	80 ksi	85 ksi	90 ksi	95 ksi	100 ksi	110 ksi	125 ksi	140 ksi	lb./ft.	inch mm
	11780	12510	13250	13980	14720	16130	17900	19580		11200	11900	12600	13300	14000	15400	17500	19600	4.60	2 3/8
	13340	14170	15010	15840	16670	18340	20840	23340		12850	13650	14460	15260	16060	17670	20080	22490	5.10	60.33
	15280	16240	17190	18150	19100	21010	23880	26740		14970	15910	16840	17780	18720	20590	23390	26200	5.80	
	16640	17680	18720	19760	20800	22880	26000	29120		16510	17540	18570	19600	20630	22690	25790	28880	6.30	
	17410	18490	19580	20670	21760	23930	27200	30460		17390	18480	19560	20650	21740	23910	27170	30430	6.60	
	19430	20650	21860	23080	24290	26720	30360	34010		19810	21040	22280	23520	24760	27230	30950	34660	7.35	
	11170	11820	12380	12940	13490	14550	16070	17490		10570	11230	11890	12550	13210	14530	16510	18490	6.40	2 7/8
	13890	14750	15620	16490	17360	19090	21700	24300		13440	14280	15120	15960	16800	18480	21000	23520	7.80	73.03
	15300	16260	17220	18170	19130	21040	23910	26780		15000	15940	16870	17810	18750	20620	23430	26250	8.60	
	16680	17730	18770	19810	20860	22940	26070	29200		16560	17590	18630	19660	20700	22770	25870	28970	9.35	
	17610	18710	19810	20910	22010	24210	27510	30820		17630	18730	19830	20930	22030	24240	27540	30850	9.80	
	18840	20020	21200	22370	23550	25910	29440	32970		19090	20280	21470	22670	23860	26250	29830	33410	10.50	
	19360	20570	21780	22990	24210	26630	30260	33890		19720	20950	22190	23420	24650	27120	30820	34510	10.70	
	20740	22040	23330	24630	25920	28520	32410	36290		21430	22770	24100	25440	26780	29460	33480	37500	11.50	
	4640	4750	4860	4950	5030	5180	5510	5740		6800	7230	7650	8080	8500	9350	10630	11900	6.50	3 1/2
	7870	8200	8540	8850	9160	9730	10500	11140		8640	9180	9720	10260	10800	11880	13500	15120	7.70	88.90
	10540	11050	11570	12080	12580	13530	14890	16150		10160	10800	11430	12070	12700	13970	15880	17780	9.20	
	12120	12880	13640	14390	15150	16670	18940	20770		11560	12280	13010	13730	14450	15900	18060	20230	10.20	
	15310	16260	17220	18180	19130	21050	23920	26790		15000	15940	16880	17810	18750	20630	23440	26250	12.70	
	16650	17690	18730	19770	20820	22900	26020	29140		16520	17550	18590	19620	20650	22720	25810	28910	13.70	
	17240	18320	19400	20480	21550	23710	26940	30170		17200	18280	19350	20430	21500	23650	26880	30100	14.30	
	17890	19010	20130	21250	22370	24600	27960	31310		17960	19080	20210	21330	22450	24700	28060	31430	14.70	
	18800	19980	21150	22330	23500	25850	29380	32900		19040	20230	21420	22610	23800	26180	29750	33320	15.50	
	19920	21160	22410	23650	24900	27390	31120	34850		20400	21680	22950	24230	25500	28050	31880	35700	16.70	
	4380	4470	4560	4630	4700	4940	5230	5420		6650	7070	7480	7900	8310	9140	10390	11640	8.20	4
	6590	6830	7080	7310	7520	7910	8390	8730		7910	8400	8900	9390	9890	10880	12360	13840	9.50	101.60
	8800	9200	9590	9980	10350	11060	12030	12890		9170	9740	10320	10890	11460	12610	14330	16050	10.90	
	11070	11620	12180	12720	13260	14290	15780	17160		10470	11120	11770	12430	13080	14390	16350	18310	12.10	
	12110	12870	13620	14380	15140	16650	18910	20740		11550	12270	12990	13720	14440	15880	18050	20210	13.20	
	13760	14620	15480	16340	17200	18910	21490	24070		13300	14130	14960	15790	16630	18290	20780	23280	14.80	
	14880	15810	16740	17670	18600	20460	23250	26040		14530	15430	16340	17250	18160	19970	22700	25420	16.10	
	15350	16310	17270	18230	19190	21110	23990	26860		15050	15990	16930	17870	18810	20690	23520	26340	16.50	
	17500	18590	19690	20780	21880	24060	27340	30630		17500	18590	19690	20780	21880	24060	27340	30630	18.90	
	20680	21970	23260	24560	25850	28430	32310	36190		21350	22680	24020	25350	26690	29360	33360	37360	22.20	
	4940	5070	5200	5310	5410	5560	5830	6110		6970	7400	7840	8280	8710	9580	10890	12200	10.50	4 1/2**
	6360	6590	6810	7030	7230	7580	8000	8300		7780	8260	8750	9240	9720	10690	12150	13610	11.60	114.30
	7500	7810	8120	8410	8690	9210	9890	10450		8430	8960	9490	10010	10540	11590	13170	14750	12.60	
	8540	8920	9300	9660	10020	10690	11600	12400		9020	9590	10150	10710	11280	12410	14100	15790	13.50	
	11080	11660	12220	12760	13300	14340	15830	17220		10480	11140	11800	12450	13110	14420	16380	18350	15.10	
	12370	13140	13920	14690	15460	17010	19330	21630		11820	12560	13300	14040	14780	16260	18470	20690	17.00	
	13020	13830	14640	15460	16270	17900	20340	22780		12510	13290	14070	14850	15630	17200	19540	21890	17.70	
	13830	14690	15560	16420	17280	19010	21610	24200		13380	14210	15050	15890	16720	18390	20900	23410	18.90	
	15800	16790	17780	18770	19750	21730	24690	27650		15560	16530	17500	18470	19440	21390	24310	27220	21.50	
	17430	18520	19610	20700	21790	23970	27240	30510		17420	18510	19600	20690	21780	23960	27220	30490	23.70	
4140	5140	5290	5430	5550	5670	5840	6050	6350	4870	7080	7530	7970	8410	8860	9740	11070	12400	13.00	5
5560	7250	7540	7830	8110	8370	8850	9480	9980	5700	8290	8810	9320	9840	10360	11400	12950	14500	15.00	127.00
7390	10500	11010	11520	12020	12520	13470	14820	16070	6970	10140	10770	11400	12040	12670	13940	15840	17740	18.00	
8240	11990	12740	13490	14240	14990	16490	18550	20320	7850	11420	12140	12850	13570	14280	15710	17850	19990	20.30	
8500	12360	13140	13910	14680	15460	17000	19320	21610	8120	11820	12550	13290	14030	14770	16250	18460	20680	20.80	
8770	12760	13560	14360	15150	15950	17550	19940	22330	8410	12240	13000	13770	14530	15300	16820	19120	21410	21.40	
9510	13830	14700	15560	16430	17290	19020	21620	24210	9200	13380	14220	15060	15890	16730	18400	20910	23420	23.20	
9900	14400	15300	16200	17100	18000	19800	22500	25200	9630	14000	14880	15750	16630	17500	19250	21880	24500	24.10	
3120	3610	3750	3860	3970	4060	4230	4400	4480	4270	6210	6600	6990	7380	7760	8540	9700	10870	14.00	5 1/2
4040	4990	5130	5260	5380	5480	5630	5890	6170	4810	7000	7440	7880	8310	8750	9630	10940	12250	15.50	139.70
4910	6290	6510	6730	6940	7140	7480	7890	8170	5320	7740	8220	8710	9190	9670	10640	12090	13540	17.00	
6620	8830	9230	9630	10020	10400	11110	12090	12950	6320	9190	9760	10340	10910	11490	12640	14360	16080	20.00	
7670	11160	11810	12380	12930	13480	14540	16060	17480	7260	10560	11220	11880	12540	13200	14530	16510	18490	23.00	
8700	12650	13440	14230	15020	15810	17390	19760	22140	8330	12120	12870	13630	14390	15150	16660	18930	21200	26.00	
9090	13220	14050	14880	15700	16530	18180	20660	23140	8750	12730	13520	14320	15110	15910	17500	19890	22270	26.80	
9580	13930	14800	15670	16540	17420	19160	21770	24380	9280	13490	14330	15180	16020	16860	18550	21080	23610	28.40	
10090	14680	15600	16510	17430	18350	20180	22940	25690	9840	14310	15200	16090	16990	17880	19670	22350	25030	29.70	
2970	3470	3590	3700	3800	3880	4020	4170	4220	4180	6090	6470	6850	7230	7610	8370	9510	10650	20.00	6 5/8
4010	4950	5080	5210	5320	5420	5570	5840	6120	4790	6970	7410	7850	8280	8720	9590	10900	12200		

Joint yield strengths are calculated from the minimum specified material yield stress and the critical joint cross sectional area, pipe or coupling, as appropriate.

Size (OD)	Nominal weight	Wall thickness		Drift diameter	Coupling (OD) reg.	Make-up loss	Coupling length	Pipe body section	Coupling CCS*	VAM TOP regular yield strength (1000 lb.)									
		inch	mm							55 ksi	80 ksi	85 ksi	90 ksi	95 ksi	100 ksi	110 ksi	125 ksi	140 ksi	
inch	lb./ft.	inch	mm	inch	inch	inch	inch	sq. in.	sq. in.	ksi	ksi	ksi	ksi	ksi	ksi	ksi	ksi	ksi	
7 177.80	23.00	0.317	8.05	6.250 A	7.488	4.776	11.535	6.655	6.786	366	532	566	599	632	666	732	832	932	
	26.00	0.362	9.19	6.151	7.565	4.776	11.535	7.549	7.693	415	604	642	679	717	755	830	944	1057	
	29.00	0.408	10.36	6.059	7.644	4.776	11.535	8.449	8.634	465	676	718	760	803	845	929	1056	1183	
	32.00	0.453	11.51	6.000 A	7.717	4.776	11.535	9.317	9.512	512	745	792	839	885	932	1025	1165	1304	
	35.00	0.498	12.65	5.879	7.787	4.776	11.535	10.172	10.376	559	814	865	915	966	1017	1119	1272	1424	
	38.00	0.540	13.72	5.795	7.852	4.776	11.535	10.959	11.172	603	877	932	986	1041	1096	1205	1370	1534	
	41.00	0.590	14.99	5.695	7.929	4.776	11.535	11.881	12.124	653	950	1010	1069	1129	1188	1307	1485	1663	
7 5/8 193.68	26.40	0.328	8.33	6.844	8.132	4.868	11.732	7.519	7.680	414	602	639	677	714	752	827	940	1053	
	29.70	0.375	9.53	6.750	8.213	4.868	11.732	8.541	8.716	470	683	726	769	811	854	940	1068	1196	
	33.70	0.430	10.92	6.640	8.305	4.868	11.732	9.720	9.917	535	778	826	875	923	972	1069	1215	1361	
	35.80	0.465	11.81	6.570	8.362	4.868	11.732	10.460	10.664	575	837	889	941	994	1046	1151	1308	1464	
	39.00	0.500	12.70	6.500	8.419	4.868	11.732	11.192	11.416	616	895	951	1007	1063	1119	1231	1399	1567	
	42.80	0.562	14.27	6.376	8.518	4.868	11.732	12.470	12.726	686	998	1060	1122	1185	1247	1372	1559	1746	
	45.30	0.595	15.11	6.310	8.569	4.868	11.732	13.141	13.412	723	1051	1117	1183	1248	1314	1446	1643	1840	
7 3/4 196.85	47.10	0.625	15.88	6.250	8.614	4.868	11.732	13.744	14.023	756	1100	1168	1237	1306	1374	1512	1718	1924	
	46.10	0.595	15.11	6.500 A	8.693	4.915	11.850	13.374	13.642	736	1070	1137	1204	1271	1337	1471	1672	1872	
8 5/8 219.08	36.00	0.400	10.16	7.700	9.266	5.604	13.189	10.336	10.560	568	827	879	930	982	1034	1137	1292	1447	
	40.00	0.450	11.43	7.625 A	9.350	5.604	13.189	11.557	11.797	636	925	982	1040	1098	1156	1271	1445	1618	
	44.00	0.500	12.70	7.500	9.433	5.604	13.189	12.763	13.017	702	1021	1085	1149	1212	1276	1404	1595	1787	
	49.00	0.557	14.15	7.386	9.526	5.604	13.189	14.118	14.395	776	1129	1200	1271	1341	1412	1553	1765	1977	
9 5/8 244.48	52.00	0.595	15.11	7.310	9.587	5.604	13.189	15.010	15.311	826	1201	1276	1351	1426	1501	1651	1876	2101	
	40.00	0.395	10.03	8.750 A	10.264	5.589	13.189	11.454	11.699	630	916	974	1031	1088	1145	1260	1432	1604	
	43.50	0.435	11.05	8.599	10.333	5.589	13.189	12.559	12.814	691	1005	1068	1130	1193	1256	1381	1570	1758	
	47.00	0.472	11.99	8.525	10.396	5.589	13.189	13.572	13.838	746	1086	1154	1221	1289	1357	1493	1697	1900	
	53.50	0.545	13.84	8.500 A	10.520	5.589	13.189	15.546	15.877	855	1244	1321	1399	1477	1555	1710	1943	2176	
9 7/8 250.83	58.40	0.595	15.11	8.375 A	10.600	5.589	13.189	16.879	17.214	928	1350	1435	1519	1604	1688	1857	2110	2363	
	62.80	0.625	15.88	8.469	10.907	5.484	12.953	18.162	18.518	999	1453	1544	1635	1725	1816	1998	2270	2543	
	65.30	0.650	16.51	8.419	10.949	5.484	12.953	18.838	19.228	1036	1507	1601	1695	1790	1884	2072	2355	2637	
	66.40	0.661	16.79	8.397	10.965	5.484	12.953	19.134	19.499	1052	1531	1626	1722	1818	1913	2105	2392	2679	
	66.90	0.668	16.97	8.383	10.978	5.484	12.953	19.322	19.736	1063	1546	1642	1739	1836	1932	2125	2415	2705	
	67.50	0.678	17.22	8.363	10.992	5.484	12.953	19.590	19.975	1077	1567	1665	1763	1861	1959	2155	2449	2743	
	68.90	0.700	17.78	8.319	11.028	5.484	12.953	20.177	20.587	1110	1614	1715	1816	1917	2018	2219	2522	2825	
10 3/4 273.05	70.50	0.720	18.29	8.279	11.059	5.484	12.953	20.708	21.134	1139	1657	1760	1864	1967	2071	2278	2589	2899	
	72.00	0.725	18.42	8.269	11.067	5.484	12.953	20.841	21.271	1146	1667	1771	1876	1980	2084	2293	2605	2918	
	45.50	0.400	10.16	9.875 A	11.400	5.634	13.268	13.006	13.273	715	1040	1106	1171	1236	1301	1431	1626	1821	
	51.00	0.450	11.43	9.694	11.488	5.634	13.268	14.561	14.865	801	1165	1238	1310	1383	1456	1602	1820	2039	
	55.50	0.495	12.57	9.625 A	11.565	5.634	13.268	15.947	16.255	877	1276	1355	1435	1515	1595	1754	1993	2233	
11 3/4 298.45	60.70	0.545	13.84	9.504	11.652	5.634	13.268	17.473	17.834	961	1398	1485	1573	1660	1747	1922	2184	2446	
	65.70	0.595	15.11	9.404	11.734	5.634	13.268	18.982	19.353	1044	1519	1613	1708	1803	1898	2088	2373	2657	
	71.10	0.650	16.51	9.294	11.825	5.634	13.268	20.625	21.027	1134	1650	1753	1856	1959	2063	2269	2578	2888	
11 7/8 301.63	54.00	0.435	11.05	10.724	12.463	5.713	13.425	15.463	15.796	850	1237	1314	1392	1469	1546	1701	1933	2165	
	60.00	0.489	12.42	10.625 A	12.557	5.713	13.425	17.300	17.653	952	1384	1471	1557	1644	1730	1903	2163	2422	
	65.00	0.534	13.56	10.625 A	12.636	5.713	13.425	18.816	19.211	1035	1505	1599	1693	1788	1882	2070	2352	2634	
13 3/8 339.73	71.00	0.582	14.78	10.430	12.719	5.713	13.425	20.420	20.857	1123	1634	1736	1838	1940	2042	2246	2553	2859	
	71.80	0.582	14.78	10.555	12.844	5.713	13.425	20.648	21.089	1136	1652	1755	1858	1962	2065	2271	2581	2891	
	61.00	0.430	10.92	12.359	14.085	5.698	13.386	17.487	17.842	962	1399	1486	1574	1661	1749	1924	2186	2448	
	68.00	0.480	12.19	12.259	14.175	5.698	13.386	19.445	19.851	1069	1556	1653	1750	1847	1945	2139	2431	2722	
	72.00	0.514	13.06	12.250 A	14.236	5.698	13.386	20.768	21.213	1142	1661	1765	1869	1973	2077	2284	2596	2908	
	77.00	0.550	13.97	12.119	14.299	5.698	13.386	22.160	22.625	1219	1773	1884	1994	2105	2216	2438	2770	3102	
	80.70	0.580	14.73	12.059	14.350	5.698	13.386	23.314	23.777	1282	1865	1982	2098	2215	2331	2565	2914	3264	
13 5/8 346.08	85.00	0.608	15.44	12.003	14.400	5.698	13.386	24.386	24.888	1341	1951	2073	2195	2317	2439	2682	3048	3414	
	86.00	0.625	15.88	11.969	14.429	5.698	13.386	25.035	25.556	1377	2003	2128	2253	2378	2504	2754	3129	3505	
	88.20	0.625	15.88	12.219	14.681	5.698	13.386	25.525	26.063	1404	2042	2170	2297	2425	2553	2808	3191	3574	
	14 355.60	86.00	0.600	15.24	12.613	14.943	6.946	15.906	25.258	25.653	1389	2021	2147	2273	2400	2526	2778	3157	3536
	93.00	0.650	16.51	12.513	15.030	6.946	15.906	27.261	27.691	1499	2181	2317	2453	2590	2726	2999	3408	3817	
100.00	0.700	17.78	12.413	15.114	6.946	15.906	29.248	29.695	1609	2340	2486	2632	2779	2925	3217	3656	4095		
106.00	0.750	19.05	12.313	15.199	6.946	15.906	31.220	31.710	1717	2498	2654	2810	2966	3122	3434	3903	4371		
114.00	0.800	20.32	12.213	15.281	6.946	15.906	33.175	33.689	1825	2654	2820	2986	3152	3318	3649	4147	4645		
120.00	0.850	21.59	12.113	15.364	6.946	15.906	35.115												

External pressure equal to collapse pressure calculated from API Bul. 5 C 3 section 1. Minimum internal yield pressure are calculated from API Bul. 5 C 3 section 3, formula 3.1.1.

External pressure (psi)																	Nominal weight	Size (OD)	
55 ksi	80 ksi	85 ksi	90 ksi	95 ksi	100 ksi	110 ksi	125 ksi	140 ksi	55 ksi	80 ksi	85 ksi	90 ksi	95 ksi	100 ksi	110 ksi	125 ksi			140 ksi
3270	3830	3900	4030	4150	4250	4430	4650	4760	4360	6340	6740	7130	7530	7930	8720	9910	11100	23.00	7
4330	5410	5580	5740	5890	6020	6230	6450	6690	4980	7240	7690	8150	8600	9050	9960	11310	12670	26.00	177.80
5410	7030	7300	7580	7840	8090	8530	9110	9560	5610	8160	8670	9180	9690	10200	11220	12750	14280	29.00	
6460	8610	8990	9370	9740	10110	10780	11710	12530	6230	9060	9630	10190	10760	11330	12460	14160	15860	32.00	
7270	10190	10680	11170	11650	12130	13030	14320	15490	6850	9960	10580	11210	11830	12450	13700	15560	17430	35.00	
7830	11390	12100	12810	13430	14010	15130	16740	18260	7430	10800	11480	12150	12830	13500	14850	16880	18900	38.00	
8490	12350	13120	13890	14660	15440	16980	19300	21560	8110	11800	12540	13280	14010	14750	16230	18440	20650	41.00	
8940	13010	13820	14640	15450	16260	17890	20330	22770	8590	12500	13280	14060	14840	15630	17190	19330	21880	42.70	
2890	3400	3510	3610	3710	3790	3920	4050	4080	4140	6020	6400	6780	7150	7530	8280	9410	10540	26.40	7 5/8
3910	4790	4910	5030	5130	5220	5350	5670	5930	4730	6890	7320	7750	8180	8610	9470	10760	12050	29.70	193.68
5100	6560	6810	7050	7270	7490	7870	8340	8690	5430	7900	8390	8880	9380	9870	10860	12340	13820	33.70	
5850	7690	8010	8330	8640	8930	9480	10200	10800	5870	8540	9070	9600	10140	10670	11740	13340	14940	35.80	
6610	8820	9220	9610	10000	10380	11080	12060	12920	6310	9180	9750	10330	10900	11480	12620	14340	16070	39.00	
7510	10820	11350	11890	12410	12930	13930	15350	16680	7090	10320	10960	11610	12250	12900	14190	16120	18060	42.80	
7910	11510	12230	12950	13670	14290	15440	17100	18670	7510	10920	11610	12290	12970	13660	15020	17070	19120	45.30	
8280	12040	12790	13540	14300	15050	16550	18700	20490	7890	11480	12190	12910	13630	14340	15780	17930	20080	47.10	
7800	11340	12050	12750	13320	13900	15000	16600	18090	7390	10750	11420	12090	12760	13440	14780	16790	18810	46.10	7 3/4
																		196.85	
3450	4100	4180	4250	4360	4470	4680	4930	5080	4460	6490	6900	7300	7710	8120	8930	10140	11360	36.00	8 5/8
4400	5530	5700	5870	6020	6170	6400	6640	6830	5020	7300	7760	8220	8670	9130	10040	11410	12780	40.00	219.08
5360	6950	7220	7490	7740	7990	8420	8980	9410	5580	8120	8620	9130	9640	10140	11160	12680	14200	44.00	
6440	8570	8960	9340	9700	10060	10740	11660	12460	6220	9040	9610	10170	10740	11300	12430	14130	15820	49.00	
7060	9660	10110	10570	11010	11450	12280	13440	14500	6640	9660	10260	10870	11470	12070	13280	15090	16900	52.00	
2570	3080	3180	3260	3330	3380	3470	3530	3530	3950	5750	6100	6460	6820	7180	7900	8980	10050	40.00	9 5/8
3250	3810	3890	4010	4130	4230	4410	4620	4730	4350	6330	6720	7120	7510	7910	8700	9890	11070	43.50	244.48
3890	4760	4880	4990	5090	5180	5300	5630	5880	4720	6870	7290	7720	8150	8580	9440	10730	12010	47.00	
5130	6620	6870	7110	7340	7560	7950	8440	8790	5450	7930	8420	8920	9410	9910	10900	12390	13870	53.50	
5990	7900	8230	8560	8880	9200	9770	10540	11190	5950	8650	9200	9740	10280	10820	11900	13520	15150	58.40	
6230	8260	8620	8980	9320	9650	10290	11140	11870	6090	8860	9410	9970	10520	11080	12180	13840	15510	62.80	9 7/8
6650	8880	9280	9680	10070	10460	11170	12160	13040	6340	9220	9790	10370	10940	11520	12670	14400	16130	65.30	250.83
6830	9150	9570	10000	10400	10810	11560	12610	13550	6440	9370	9960	10540	11130	11710	12890	14640	16400	66.40	
6940	9330	9760	10190	10610	11030	11810	12900	13880	6510	9470	10060	10650	11250	11840	13020	14800	16570	66.90	
7030	9580	10030	10480	10910	11350	12160	13310	14350	6610	9610	10210	10810	11410	12020	13220	15020	16820	67.50	
7240	10120	10610	11100	11580	12050	12940	14210	15370	6820	9920	10540	11160	11780	12410	13650	15510	17370	68.90	
7440	10620	11140	11670	12180	12680	13650	15030	16310	7020	10210	10850	11480	12120	12760	14040	15950	17860	70.50	
7480	10750	11280	11810	12330	12840	13830	15240	16540	7070	10280	10920	11560	12210	12850	14130	16060	17990	72.00	
2090	2470	2520	2560	2590	2600	2610	2610	2610	3580	5210	5530	5860	6190	6510	7160	8140	9120	45.50	10 3/4
2700	3210	3320	3410	3490	3550	3660	3740	3750	4030	5860	6230	6590	6960	7330	8060	9160	10260	51.00	273.05
3390	4020	4090	4170	4290	4400	4610	4850	4990	4430	6450	6850	7250	7660	8060	8860	10070	11280	55.50	
4160	5160	5310	5460	5580	5700	5880	6070	6390	4880	7100	7540	7980	8430	8870	9760	11090	12420	60.70	
4920	6310	6530	6760	6960	7160	7510	7920	8200	5330	7750	8230	8720	9200	9690	10650	12110	13560	65.70	
5770	7560	7880	8190	8480	8770	9300	9990	10560	5820	8470	8990	9520	10050	10580	11640	13230	14810	71.10	
2070	2440	2490	2530	2550	2560	2570	2570	2570	3560	5180	5510	5830	6150	6480	7130	8100	9070	54.00	11 3/4
2660	3170	3260	3360	3440	3500	4700	3680	3680	4010	5830	6190	6550	6920	7280	8010	9100	10200	60.00	298.45
3290	3870	3930	4060	4180	4280	4470	4690	4800	4370	6360	6760	7160	7560	7950	8750	9940	11130	65.00	
3970	4880	5010	5130	5240	5330	5470	5760	6030	4770	6930	7370	7800	8230	8670	9530	10840	12140	71.00	
3880	4750	4870	4980	5080	5170	5290	5630	5880	4720	6860	7290	7720	8150	8580	9430	10720	12010	71.80	11 7/8
																		301.63	
1540	1670	1670	1670	1670	1670	1670	1670	1670	3090	4500	4780	5060	5340	5630	6190	7030	7880	61.00	13 3/8
1950	2260	2300	2320	2330	2330	2330	2330	2330	3450	5020	5340	5650	5970	6280	6910	7850	8790	68.00	339.73
2230	2660	2730	2790	2820	2850	2880	2880	2880	3700	5380	5720	6050	6390	6730	7400	8410	9420	72.00	
2580	3090	3190	3270	3340	3400	3490	3550	3550	3960	5760	6120	6480	6840	7200	7920	9000	10070	77.00	
2950	3450	3580	3680	3780	3860	4000	4140	4180	4170	6070	6450	6830	7210	7590	8350	9490	10620	80.70	
3300	3880	3940	4060	4180	4280	4470	4690	4810	4380	6360	6760	7160	7560	7960	8750	9940	11140	85.00	
3510	4190	4270	4350	4420	4540	4760	5030	5190	4500	6540	6950	7360	7770	8180	9000	10220	11450	86.00	
3360	3980	4040	4140	4260	4370	4570	4800	4930	4420	6420	6820	7220	7630	8030	8830	10030	11240	88.20	13 5/8
																		346.08	
2870	3370	3490	3590	3680	3750	3880	4010	4030	4130	6000	6380	6750	7130	7500	8250	9380	10500	86.00	14
3460	4120	4190	4260	4370	4480	4690	4950	5100	4470	6500	6910	7310	7720	8130	8940	10160	11380	93.00	355.60
4040	4990	5130	5260	5380	5480	5630	5890	6170	4810	7000	7440	7880	8310	8750	9630	10940	12250	100.00	
4630	5870	6070	6260	6440	6600	6880	7200	7380	5160	7500	7970	8440	8910	9380	10310	11720	13130	106.00	
5220	6750	7000	7260	7500	7730	8130	8650	9030	5500	8000	8500	9000	9500	10000	11000	12500	14000	114.00	
5810	7630	7940	8260	8560	8850	9380	10090	10680	5840	8500	9030	9560	10090	10630	11690	13280	14880	120.00	

* Coupling CCS = Coupling Critical Cross Section

1 ksi = 1000 psi
 1 psi = 0.006895 Mpa
 0.06895 bar

VAM® TOP is a T&C connection ideal for tubing and production casing strings applications. VAM® TOP provides gas-tight sealing under the most severe conditions including great depths, highly deviated holes, and hostile environments. It outperforms the majority of today's premium connections designed according to casing and tubing requirements.

New metal-to-metal seal

- A patented metal-to-metal seal system offers from 2 3/8" to 14" excellent gas-tight sealing, even under the most severe combined loads, as encountered in deviated or long horizontal wells applications.
- Sealing integrity remains constant despite repeated make-ups and break-outs.
- Seal geometry protects against galling.

Reverse angle torque shoulder

- A reverse angle torque shoulder provides a positive torque stop which allows for accurate power-tight make-up and minimizes hoop stresses in the connection.
- The "wedge" effect caused by the reverse angle gives the connection superior structural strength.
- The shoulder design is optimized in order to resist adverse conditions such as combined compression and external pressure or combined bending, compression, and torque (see the corresponding gas-tight VME performance envelopes for tubing and casing sizes).

Improved hook thread design

- A modified hook thread profile with 3° reverse angle on the load flank, not only provides the connection with superior tension strength but also increases its resistance to compression.
- The excellent structural strength including increased bending and compression resistance, makes this connection especially suited for highly deviated and long horizontal wells.
- Optimized thread geometry minimizes the risk of galling, even when thread lubricants are poorly applied.

BENEFITS

- **Excellent gas-tight sealing under combined loads**
- **Excellent resistance to bending, compression and torque**
- **Excellent resistance to external pressure and compression**
- **Easy to use and repair**

Coupling design

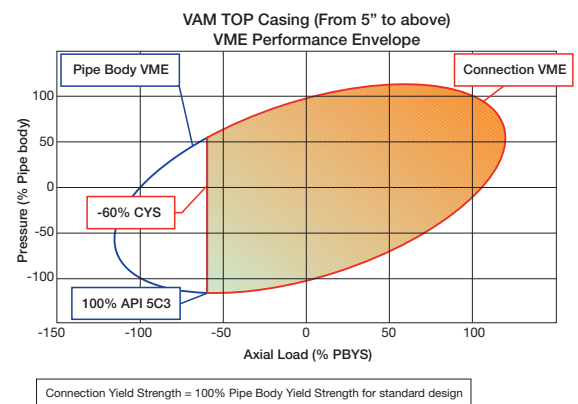
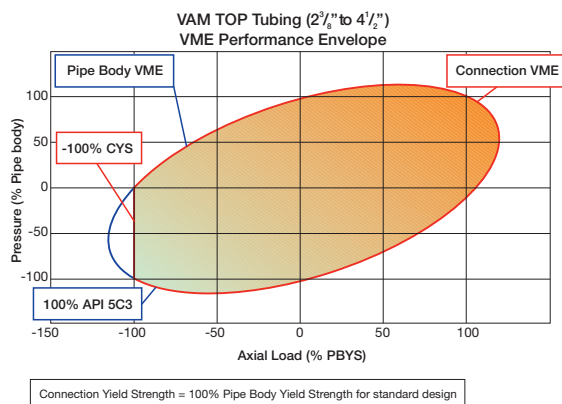
- Coverage of the vanishing threads, long internal shoulder, and coupling critical cross sections greater than those of the pipe body contribute to a high-performance, 100% efficient connection.

Streamlined internal profile

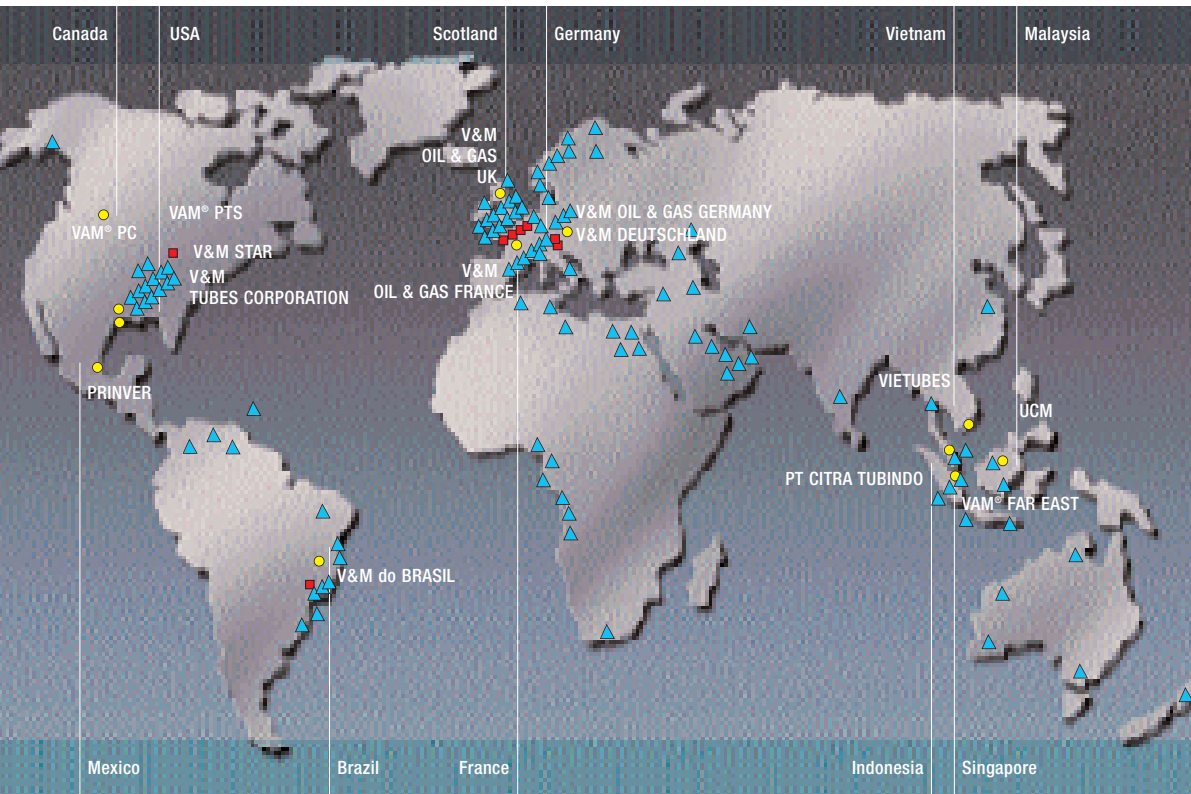
- A pin ID chamfer, tight tolerances on the coupling center and a long shoulder combine to minimize turbulence and energy loss inside the connection for high-velocity gas flows.

Options

- VAM® TOP SC90 / VAM® TOP SC80 (special clearance): these extra-clearance couplings offer 90% and 80% tensile efficiency respectively.
- PC option: this option is used to accommodate internal coatings.



Our worldwide network for your success



- Threading plants
- Rolling mills
- ▲ Accessories and repair
- VAM® licensee facilities

**VALLOUREC MANNESMANN
OIL & GAS FRANCE**
Sales and Technical Sales
130, rue de Silly
92100 Boulogne-Billancourt
France
Phone +33 1 49093586
Fax +33 1 49093713

**VALLOUREC MANNESMANN
OIL & GAS GERMANY GmbH**
Sales and Technical Sales
Theodorstrasse 90
40472 Düsseldorf
Germany
Phone +49 211 960-0
Fax +49 211 960-3924

**VALLOUREC MANNESMANN
OIL & GAS UK Ltd.**
Prospect Place
Westhill Industrial Estate
Westhill
Aberdeenshire, UK - AB32 6SY
Phone +44 1224 279340
Fax +44 1224 279341

**VALLOUREC & MANNESMANN
TUBES CORP.**
1990 Post Oak Blvd, Suite 1400
Houston, TX 77056-3813, USA
Phone +1 713 4793200
Fax +1 713 4793201

VAM PTS
19210 Hardy Road
Houston, TX 77073
USA
Phone +1 281 8215510
Fax +1 281 8217760

V&M STAR
8603 Sheldon Road
Houston, TX 77049, USA
Phone +1 281 4566000
Fax +1 281 4567247

VAM PC
1920, 444 - 5th Avenue SW
Calgary, Alberta
Canada T2P 2T8
Phone +1 403 2330119
Fax +1 403 2662332

PRINVER
Av. Framboyanes Lote 6, Manzana 5
Cd. ind. Bruno Pagliai
Tejeria, Vera Cruz
CP 91697 - Mexico
Phone +52 229 989 8716
Fax +52 229 981 0349

V & M do BRASIL
Rua Lauro Müller 116 - Sala 1906
Botafogo 22290-160
Rio de Janeiro - RJ
Brazil
Phone + 55 21 38738300
Fax + 55 21 38738316

**VAM Field Service
International**
Prospect Place
Westhill Industrial Estate
Westhill
Aberdeenshire, UK - AB32 6SY
Phone +44 1224 279380
Fax +44 1224 279384

**VALLOUREC MANNESMANN
OIL & GAS**
Middle East Office
World Trade Center
6th Floor, suite 604
P.O. Box 9405
Dubai, U.A.E.
Phone +971 4 329 16 18
Fax +971 4 329 16 22

VAM FAR EAST PTE Ltd.
No. 16, Jalan KilangTimor
#06-05, Redhill Forum
Singapore 159308
Phone +65 6736 23 72
Fax +65 6235 11 26

**VAM SERVICES
Licensee Network**
OCTG Division
21-23 rue de Leval
59620 Aulnoye Aymeries
France
Phone +33 3 27696615
Fax +33 3 27664575

Please visit our website:
www.vamservices.com



**VALLOUREC & MANNESMANN TUBES
OCTG DIVISION**